

AggRAM Platelet Aggregometer



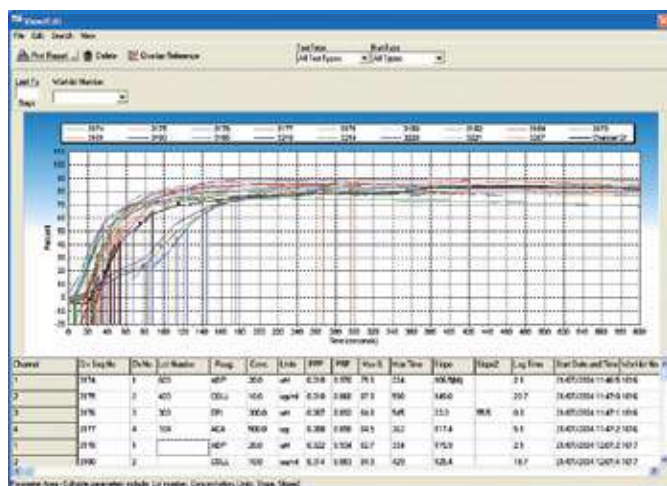
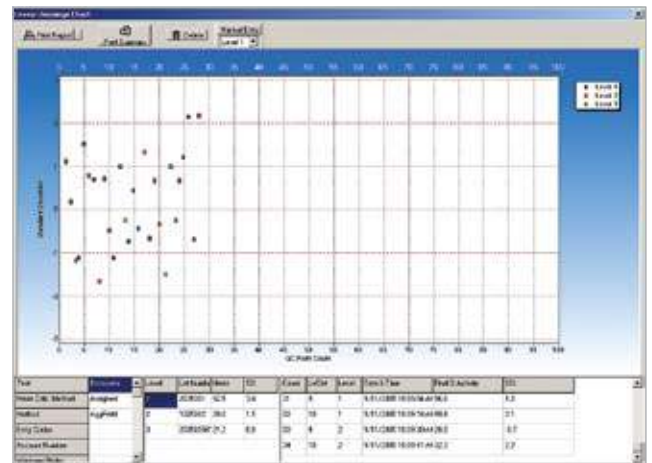
Platelet Aggregation testing for the modern laboratory



The AggRAM offers fully customisable platelet aggregation and ristocetin cofactor testing by combining a high performance analyser with powerful software that allows up to 21 patient results to be overlaid and compared simultaneously.

- **4 or 8 Channels** – Fully flexible, multiple agonist configurations and concentrations
- **Flexibility** – Customise your assay test sequence, calibration, dilutions, volumes, run times, display parameters, input additional agonists and create new screens
- **Half-volume** – Fully optimised half volume settings, including programmable stirrer speed
- **Powerful data handling** – Automatic calculation of slope, max% aggregation, time to max aggregation, lag phase, secondary slope and area under the curve (research use only) with full manual edit options
- **Security** – Operator log on with password level protection
- **Database** – Extensive database for patient results, quality control and standards. Data retrieval with the safety of full automatic backup

- **Interface** – LIMS bi-directional host interface
- **Quality control** – Evaluation and graphical Levey-Jennings display of QC data based on assigned Westgard rules with integrated corrective action log



Class-leading analysis software – HemoRAM

- **Overlay and compare up to 20 previous results** with the current test – determine ranges for normal results using normal/abnormal data
- **Export** result data to CSV, TXT, QRF, HTM, XLS, RTF, PDF formats, allowing free interchange of results with colleagues
- **Flexible working** – enter patient demographics either before or after results, allowing you to include diagnoses in reports
- **Customised reports** – Include data from one channel or four, one patient or the whole run, retrieve archived data to profile individual patients

AggRAM Assays



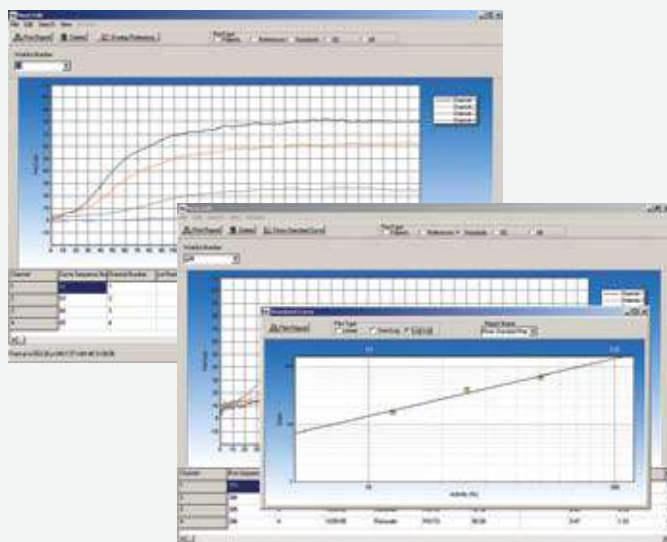
Catalogue numbers

Platelet Aggregation Assay Kit			5369
• 2×1.0 mL ADP			
• 2×1.0 mL Collagen			
• 2×1.0 mL Epinephrine			
Ristocetin	15mg/mL	(10×0.5 mL)	5199
ADP	200µM	(2×1.0 mL)	5366
Epinephrine	3mM	(2×1.0 mL)	5367
Collagen	100µg/mL	(2×1.0 mL)	5368
Arachidonic Acid	5mg/mL	(2×1.0 mL)	5364

Platelet Aggregation

- Customise and define your multi agonist panel, reagent name, concentration, units, test sequence and secondary slope extrapolation, reaction volumes, run times and display parameters
- Automatic calculation of slope, max % aggregation, time to max aggregation, lag phase, secondary slope and area under the curve (research use only) with full manual edit options and smooth data function
- High quality results with unsurpassed precision
- CVs <3% - max% aggregation
- Store and overlay up to 21 aggregation reference curves from the AggRAM database
- Full range of high quality aggregation reagents
- Agonists supplied at a high stock solution concentration to enable high dose and low dose dilutions¹

1: Platelet function testing by aggregometry: Approved guideline H58-A vol 28 No. 31



Catalogue numbers

Ristocetin Cofactor Assay Kit (120 tests)			5370
Ristocetin 10mg/mL		(10×1.5 mL)	5372
Lyophilised Platelets		(5×5.0 mL)	5371
Lyophilised Platelets		(5×10.0 mL)	5356
Ristocetin Cofactor Abnormal Control		(10×0.5 mL)	5373
SARP Reference Plasma		(10×1.0 mL)	5185
Tris-Buffered Saline		(1×125 mL)	5365

Ristocetin Cofactor

- Customise and define your assay including test sequence, calibration standards and dilutions, reaction volumes, run times and display parameters
- Calibration via a four-point curve or three-point plus quality control. Automatic r^2 calculation
- Results expressed graphically in raw data or plotted directly against the calibration curve
- Define your quality control material and selectively assign Westgard rules. QC software includes automatic error messages and an integrated corrective action log
- Quality control data is evaluated and displayed graphically using Levey-Jennings charts. High quality results with unsurpassed precision. Within run CVs <5%
- Full range of high quality Ristocetin Cofactor assay reagents available as a complete kit or separate components to minimise reagent wastage

AggRAM Catalogue numbers



Description	Cat. no.
AggRAM Analyser (plus software only)	1487
AggRAM Analyser (including PC and software)	1487PC
AggRAM Cuvettes (×200)	1473
AggRAM Stir Bars (×30)	1489
AggRAM Platelet Scale Set	1479

AggRAM Specifications

Test Types:	Platelet Aggregation and Ristocetin Cofactor
Absorbance Range:	0.0 to 2.0 OD
Measuring Wavelength:	650 nm
Optical Chambers per module:	Four chambers for combined or individual measurements
Cuvettes:	8 mm × 60 mm (siliconised glass)
Stir Bars:	3.5 mm × 4 mm (coated magnet)
Incubation and Reaction Temperatures:	37°C +/-1°C
Graphs:	-20% to 110% activity (+/-0.5%) versus time
Instrument Operating Environment:	Ambient Temperature Range 15°C to 30°C (59 to 86°F)
Input Power:	110/220 Vac, 50/60 Hz, 1200 Watts Maximum
Dimensions:	6" (15.24 cm) tall × 10" (25.40 cm) wide × 17" (43.18 cm) deep
Weight:	< 15 lbs (6.75 kg)

Computer Minimum Specifications:

- 800 MHz or higher processor (Intel Pentium/Celeron family processor recommended)
- 64 MB or higher recommended of RAM.
- 1.5 GB of available hard disk space.
- Microsoft ® Windows ® 2000, XP Operating Systems, CD-RW drive.
- Super VGA (800 x 600) or higher resolution video adapter monitor.
- Keyboard and Microsoft Mouse or compatible pointing device.
- Optional - Handheld Wedge Type Bar Code Scanner (Unitech or compatible) capable of reading:
Code 39, Codabar, EAN 128, Interleaved 2 of 5, Code 128.

Helena Biosciences Europe
Queensway South
Team Valley Trading Estate
Gateshead
Tyne and Wear
NE11 0SD

Tel +44 (0)191 482 8440
Fax +44 (0)191 482 8442
Email info@helena-biosciences.com